

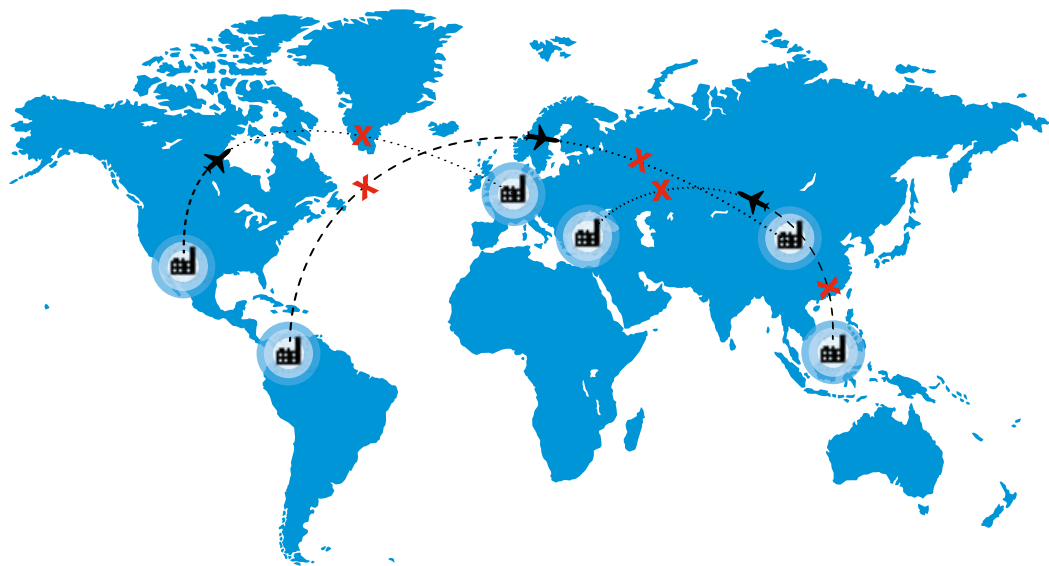


# **BATA** **INDUSTRIALS** **CATALOG** **2023**



## LOCAL PRODUCTION

Despite being a global organisation, Bata Industrials produces a portion of its footwear locally. This allows us to save on logistical and financial costs as well as reduce our carbon footprint. That's because less CO<sub>2</sub> is emitted during transportation when more shoes are produced locally. Our ambition is to source 50% of our production, purchases and components within our local markets to reduce the distance between product and customer. This strategy of local production is implemented worldwide within Bata Industrials.



*The strategy of local production:  
It reduces transportation and environmental impact.*

# AN INVITATION.

When you develop safety shoes, it is mandatory to be a responsible company. You must actually care, and of course we do.

We all share the same planet. The place where we have to get along, help each other out and make sure next generations can live healthy and happy lives.

With our products, we make professionals stand strong and walk with confidence. A great way of contributing to the well-being of people, but there is more.

We constantly increase the use of sustainable materials, stimulate eco-intelligent development, and keep reducing our energy consumption. We continuously collaborate with global partners to create sustainable development.

But most of all, we look after each other. We invite you to do the same.

Best regards and stay safe,

A handwritten signature in black ink, appearing to read 'M. Mathot', with a stylized flourish at the end.

Martijn Mathot  
Managing Director

# THE SAFETY SHOE



# Content

---

Finding the Perfect Match	6
SUMM+ collection	8
Radiance collection	12
SportMates® collection	18
Eagle collection	20
Swift collection	24
Lunar collection	26
The Safety Standard	27

---

# FINDING THE PERFECT MATCH

We know what moves you. We know that people work at their best when they have the right equipment, are well-protected and feel comfortable. Keeping them safe, healthy, active and energised is our mission.

Through our extensive knowledge and broad experience in various working environments, we know exactly what you need, what your circumstances are, what challenges you face and how you move throughout your day.

Bata Industrials has selected 6 main industries to focus on when we develop our shoes. But it doesn't stop there! We know how much jobs in a single area can vary. That's why we created a perfect footwear solution for any job that needs to be done. The perfect match for your needs and wishes. We are more than happy to

advise you on the perfect shoe to match your needs and wishes.

For example, we have developed different sole materials and profiles for any working surface. And no matter what climate or weather condition you work in, we have a shoe with the right upper available for you, from waterproof to extremely breathable. Whatever the environment or circumstances, Bata Industrials always has The Safety Shoe.

**SERIOUSLY.**

## FINDING THE PERFECT MATCH



**CONSTRUCTION**



**TRANSPORT & LOGISTICS**



**HEAVY INDUSTRY**



**AUTOMOTIVE**



**LIGHT INDUSTRY**



**AGRICULTURE**





# SUMM+ COLLECTION

No compromise.

Introducing the SUMM+ FIVE: a high-resistance safety shoe combining safety, durability and comfort, without compromising on style.

The SUMM+ FIVE is a lightweight, stable and slip resistant safety shoe. Designed with an eye for Italian craftsmanship and style, this shoe looks stylish and keeps your feet protected even in the toughest work

conditions. The premium materials in reflect their superior performance and longevity. The PU/TPU-sole (SRC) has a uniquely designed profile surface for an advanced level of slip resistance. A lightweight aluminum toecap and a FlexGuard® composite penetration resistant insert provide maximum protection. The Premium Fit inlay sole offers greater comfort, shock absorption and stability.





safety + durability + comfort + style

### SUMM+ FIVE ESD S3 SRC

- › Full grain leather upper
- › BOA® Fit System
- › FlexGuard® composite penetration resistant insert
- › Aluminum toecap impact resistance 200J
- › Mesh lining
- › Odor Control
- › PU/TPU-sole
- › Width W
- › Size range: 38-48



# HAND-CRAFTED IN ONE OF ITALY'S MOST FAMOUS SHOE MAKING DISTRICTS, SUMM+ IS ITALIAN MADE AND DESIGNED

Italian artisan traditions blend seamlessly with today's most innovative technology to guarantee quality, comfort and style. Characterised by an Italian eye for detail, this collection puts equal emphasis on safety and durability. Modern materials, sophisticated manufacturing processes, and a sixth sense for fashion come together into one grand design.

## LIGHTWEIGHT ALUMINUM TOECAP

The SUMM+ collection features a lightweight aluminum toecap, which is much lighter than traditional steel yet just as safe. The aluminum application is robust, making walking around easier and lighter without compromising protection or safety levels.



*Odor Control is a total solution that attacks and controls 99.9% of bacteria attracted to sweaty feet. It is based on a completely natural plant extract, derived from peppermint.*



## COMFORT

The Premium Fit inlay sole features a mesh top layer. The POLIYOU® foam technology provides outstanding breathability, shock absorption, and antibacterial and moisture-absorbing properties. Special zones provide support and stability, with added shock absorption for improved energy. Designed for maximum comfort.

BOA

### BOA® FIT SYSTEM

Engineered for fast, effortless, precision fit. It consists of a micro-adjustable dial, a super-strong lightweight lace and low friction lace guides.

### ESD: ELECTROSTATIC DISCHARGE

Prevents a build-up of static electrical charges in the human body by sending them to the ground in a safe and controlled manner. ESD safety shoes guarantee the prevention of sudden flow of electricity between electrically charged objects caused by contact.

### SLIPRESISTANCE

Slips, trips and falls are the number one cause of accidents in the workplace. This makes slip resistance one of the most important elements of a safety shoe. Every SUMM+ model is equipped with a SRC certified TPU-outsole with deeper tread grooves for better grip. SRC certification means the sole's slip resistance has been tested on both ceramic tiles covered in Sodium Lauryl Sulphate (soap) and on a steel surface with glycerol (SRA + SRB = SRC). The TPU-outsole passed both tests with flying colors.

*Fun fact: The '51° N' symbol found on our shoes stands for Bata Industrials' main headquarters in Best, the Netherlands, located at 51.492406° latitude.*





# RADIANCE COLLECTION

Seriously safe. Seriously boosting.

The Radiance collection is designed with an eye for style, safety and comfort. In addition to the sporty look, the shoes offer maximum protection and ultimate comfort. All day long. To give your feet the highest level of comfort, the Radiance collection features a special lightweight EVA midsole with 3B-Motion Technology:

Bata's Boosting Base. This gives feet a huge power boost every step of the way. In combination with an inlay sole of high elastic EVA and the robust SRC certified Vibram® outsole, this ensures an optimal level of comfort and energy retention. Even after a long working day, your feet will still feel comfortable and you'll be left with energy to spare!

### UP ESD S3 SRC

- › Mesh/seamless TPU film upper/abrasion resistant TPU toecap
- › FlexGuard® composite penetration resistant insert
- › Composite toecap impact resistance 200J
- › Mesh lining
- › EVA/rubber sole (Vibram®)
- › Width W
- › Size range: 34-47



FULL  
METAL  
FREE

### ENERGY ESD S3 SRC

- › Mesh/seamless TPU film upper/abrasion resistant TPU toecap
- › FlexGuard® composite penetration resistant insert
- › Composite toecap impact resistance 200J
- › Mesh lining
- › EVA/rubber sole (Vibram®)
- › Width W
- › Size range: 34-47



FULL  
METAL  
FREE

### SPARK ESD S1P SRC

- › Knitted fabric/seamless TPU film upper/abrasion resistant TPU toecap
- › FlexGuard® composite penetration resistant insert
- › Composite toecap impact resistance 200J
- › Mesh lining
- › EVA/rubber sole (Vibram®)
- › Width W
- › Size range: 34-47



FULL  
METAL  
FREE

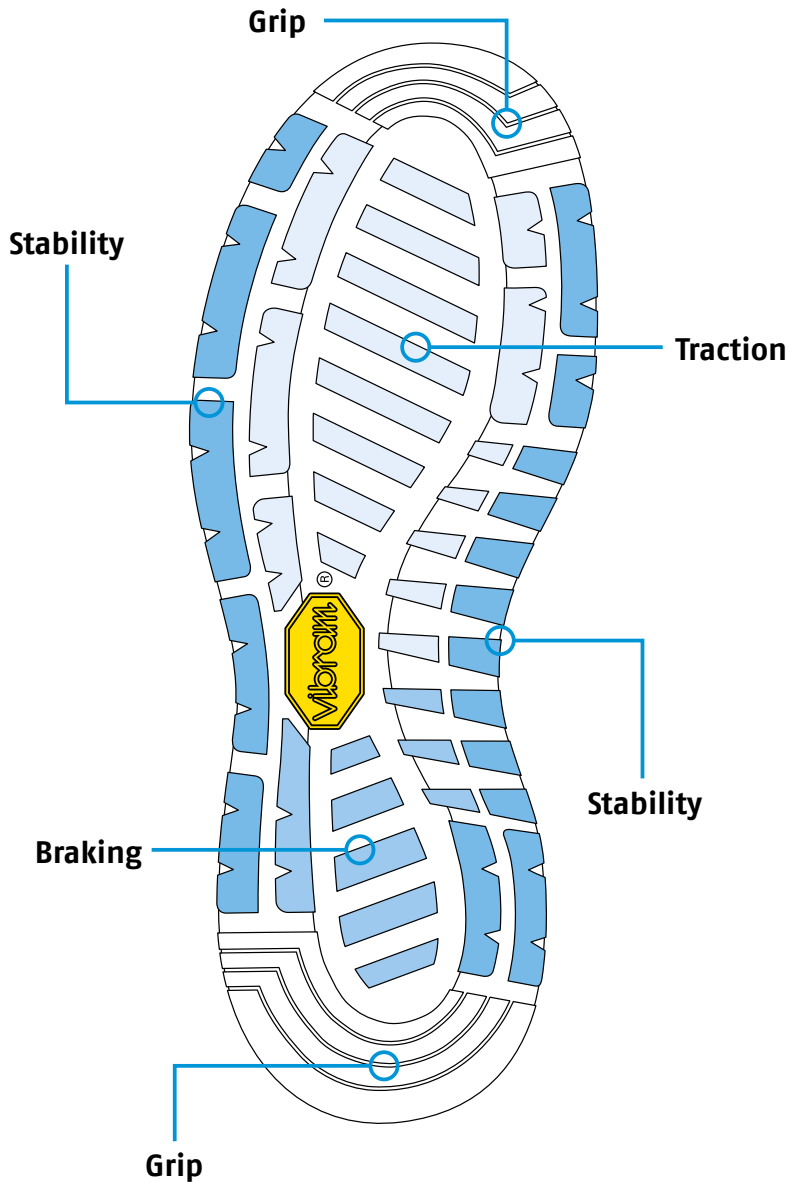
# Grip

## The Vibram® outsole

The Vibram® outsole is best known for its performance in terms of SRC slip resistance. Vibram® is the world's leading specialist in outsoles for a variety of footwear. The Italian company is named after its founder, Vitale Bramani.

Bramani invented the first rubber lug shoe soles. A lug sole is a thick rubber sole with deep indentations, which improves stability and traction. These soles were first used on mountaineering boots, replacing leather soles fitted with hobnails.





Our safety shoes are fitted with a Vibram® outsole to ensure maximum stability, grip and comfort and at the same time channel more energy into each step.

To give your feet the highest level of comfort, the Radiance collection features a special lightweight EVA midsole, using our own developed 3B-Motion technology: Bata's Boosting Base. The special molecular EVA structure is arranged in such a way that very little energy is lost upon ground impact. The use of specially formulated EVA material with high cushioning and elastic properties increases the level of comfort even further. What's more, you will get a real power BOOST when you are walking, and as a result you will feel more energised.

# BOOST YOUR FEET

**3B-MOTION:  
BATA'S BOOSTING BASE**

---

## ENERGY RETURN CUSHION

As a global leader in safety shoes, Bata Industrials has carefully adapted the highly boosting properties of EVA in the midsole. EVA is a common cushioning material in modern sports shoes, but the movements you make while work are different from when you are jogging; you lift, turn, kneel, bend and so on. It is therefore essential to get maximum feet and knee support. That is why we have performed numerous density tests in order to create a perfect balance between cushioning, energy return and stability.

**STABILITY**

The midsole hardness is 48 shore C. Wearing tests have proven that this is the right amount of softness to get the best balance between maximum feet comfort and stability.

**COMFORT**

By experimenting with the hardness of the midsole, we did not have to settle for a hard, uncomfortable rubber midsole or a structureless fluffy midsole. By incorporating our 3B-Motion technology, we have managed to create a perfect rebound, and therefore a smooth and comfortable feel. You can feel the boost in each step!





# SPORTMATES® COLLECTION

Seriously safe. Seriously sporty.

The SportMates® collection with four models focuses on safety, breathability and lightweight. With their sporty style and lightweight design, SportMates are the perfect solution for every sporty and price-sensitive professional. Safety is the most crucial factor in the development process of our footwear. But when it comes to safety shoes, professionals today want more than just the best protection. They want shoes that offer maximum comfort and stability, look stylish and at the same time provide

their feet with the best support. The new models are responding to this demand. We have not only changed the uppers in colour and design, but also the outsole, which is more in line with what you see in sneakers. A soft cushioning EVA midsole provides excellent comfort and high shock absorption. The midsole is combined with a latex foam inlay sole and a lightweight upper made of breathable materials. These unique features ensure optimal climate and comfort in the shoe, all day long.

**BRISK S3 SRC**

- › Microfiber/mesh/PU non-stitching upper
- › FlexGuard® composite penetration resistant insert
- › Composite toecap impact resistance 200J
- › Mesh lining
- › EVA/rubber sole
- › Width W
- › Size range: 35-48



**FULL  
METAL  
FREE**

**DENSE S3 SRC**

- › Microfiber/mesh/PU non-stitching upper
- › FlexGuard® composite penetration resistant insert
- › Composite toecap impact resistance 200J
- › Mesh lining
- › EVA/rubber sole
- › Width W
- › Size range: 35-48



**FULL  
METAL  
FREE**

**MEDEL S1**

- › Microfiber/mesh/PU non-stitching upper
- › Composite toecap impact resistance 200J
- › Mesh lining
- › EVA/rubber sole
- › Width W
- › Size range: 35-48



**FULL  
METAL  
FREE**

**WRIGHT S1**

- › Microfiber/mesh/PU non-stitching upper
- › Composite toecap impact resistance 200J
- › Mesh lining
- › EVA/rubber sole
- › Width W
- › Size range: 35-48



**FULL  
METAL  
FREE**



# EAGLE COLLECTION

Seriously safe. Seriously affordable.

This collection is designed to deliver stellar safety, comfort and design at a most competitive price. Indeed, the level of comfort offered at this price is unprecedented. This is because of the lightweight PU foamed OrthoLite or pre-shaped memory foam footbed, providing a comfortable and soft feel. This, combined with a lower density PU or EVA/ rubber outsole, maximises stability and grip. Along with the innovative flex technology and excellent shock absorption, these shoes meet your expectations in every way.

The EAGLE collection features a variety of shoe types. Each pair with its own unique aspect like the new developed outsole featuring the Easy Rolling System® or the ingenious Tunnelsystem®, as well as a premium footbed. The uppers are made from the best upper material and the design of the shoe is modest but trendy.

Designed to match high standards, the EAGLE collection delivers the kind of safety and performance at a price that is unmatched in the industry.



### NORFOLK S3 SRA

- › Action leather FHC upper
- › FlexGuard® composite penetration resistant insert
- › Composite toecap impact resistance 200J
- › Mesh lining
- › PU sole
- › Width W
- › Size range: 35-49



**FULL  
METAL  
FREE**

### TITAN 5 S3 HRO SRC

- › Nubuck upper
- › FlexGuard® composite penetration resistant insert
- › Composite toecap impact resistance 200J
- › Mesh lining
- › EVA/rubber sole | Heat resistant outsole
- › Width W
- › Size range: 35-49



**FULL  
METAL  
FREE**

### TITAN 5 PRO S3 HRO SRC

- › Chemical Resistance – Anti-Chemical Treatment according to EN13832
- › Full grain leather upper
- › FlexGuard® composite penetration resistant insert
- › Composite toecap impact resistance 200J
- › Mesh lining
- › EVA/rubber sole | Heat resistant outsole
- › Width W
- › Size range: 35-49



**FULL  
METAL  
FREE**



### STOCKHOLM S3 SRA

- › Action leather FHC upper
- › FlexGuard® composite penetration resistant insert
- › Composite toecap impact resistance 200J
- › Mesh lining
- › PU sole
- › Width W
- › Size range: 35-49



**FULL  
METAL  
FREE**

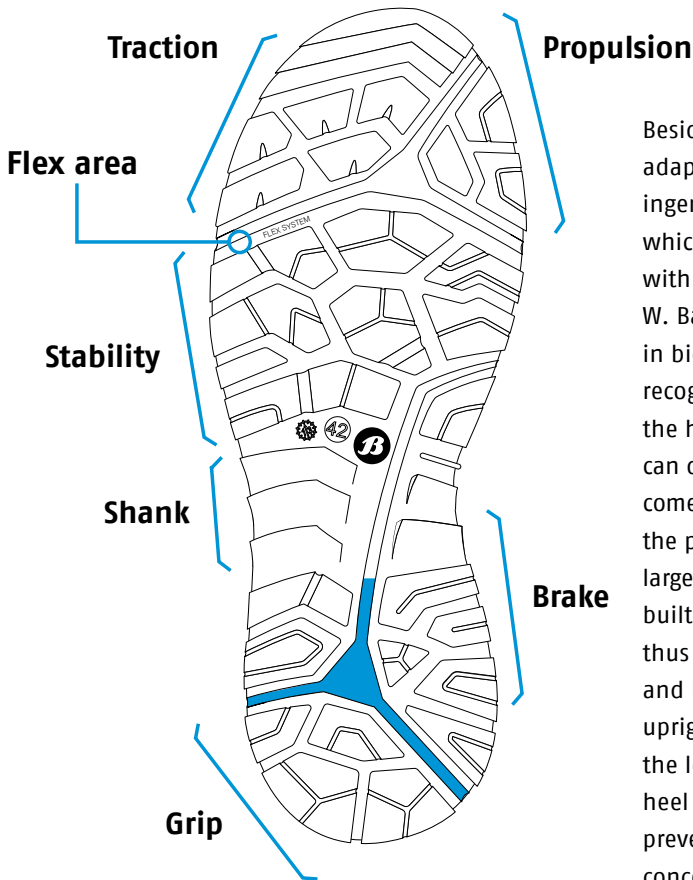
Easy Rolling System®

# DETAILS MAKE THE DIFFERENCE



For the EAGLE collection we use a lower density PU outsole with a lighter weight with good SRC slip resistance. To prevent feet becoming tired we use in the outsole the Easy Rolling System®, a subtle adaptation with major consequences. By pre-forming the front of the foot the natural motion of the foot is supported in an optimum way. The effect of this is energy saving and comfort increasing. It is details of this kind which make the difference on the work floor.

# Tunnelsystem®



Beside this subtle adaptation we use the ingenious Tunnelsystem®, which we developed with the renowned Dr. W. Baumann, professor in biomechanics. This recognisable notch in the heel (the tunnel) can deform when it comes down, to spread the pressure over a larger surface area. This built-in shock absorber thus spares the joints and keeps the wearer upright. By spreading the load, it also gives the heel extra stability. This prevents tiredness, loss of concentration and hence a great many accidents.

All this, together with the OrthoLite footbed, the EAGLE offers maximum comfort and shock absorption while, at the same time, keeps your feet cool, dry and healthy.



# SWIFT COLLECTION

Seriously lightweight and comfortable.

Timeless lightweight and comfortable, this is the Swift collection. Made for walking in the Food Industry, Facilities, Medical and Uniformed sectors. The slip resistant sole is ideally suited for slippery surfaces. The unique pattern of the sole is SRC

certified. The comfort in the shoes is excellent due to the Ortholite insoles. This allows you to keep performing throughout the day. The Swift White is equipped with a heat resistant rubber outsole.



### SWIFT WHITE S2 HRO SRC ESD

- › White microfiber upper
- › FlexGuard® composite penetration resistant insert
- › Composite toecap impact resistance 200J
- › Mesh lining
- › EVA/rubber sole | Heat resistant outsole
- › Width W
- › Size range: 35-46
- › Safety categorie ESD 61430 Class 3/S2





# LUNAR COLLECTION

Seriously safe. Seriously comfortable.

Lunar is the proof that safe and comfortable safety shoes can also look good. The entire Lunar collection has been developed with Bata Industrials' years of experience and knowledge in safety footwear. This has resulted in the perfect sole, style, grip and performance.

## GLADSTONE S1P

- › Barton leather upper
- › Steel anti-penetration midsole
- › Steel toecap impact resistance 200J
- › Mesh/anti abrasion counter lining
- › PU/PU outsole
- › Moulded EVA insole
- › Size range: 35-48





# THE SAFETY STANDARD

If a shoe carries a CE-label, this indicates the following: the product meets the requirements of European Regulation 2016/425 regarding personal protective equipment. The CE-standard EN ISO 20345 consists of two parts. The basis label means that a product meets a number of basic requirements. If the product also meets certain additional requirements, this is indicated by a symbol on the shoe.

## EXPLANATION OF THE SYMBOLS

- OB** Professional shoes without a toecap
- SB** Protective footwear for professional use with toecaps designed to give protection against impact when tested at an energy level of 200 joules
- S1** As SB plus antistatic properties, energy absorption of seat region, closed heel and resistance to fuel/oil
- S1P** As S1 plus anti penetration resistant insert
- S2** As S1 plus water resistance and water absorption of upper material
- S3** As S2 plus anti penetration resistant insert and cleated outsole
- S4** All-rubber or all-polymer footwear, antistatic properties, energy absorption of seat region, protective toecap, closed heel and resistance to fuel oil
- S5** As S4 plus anti penetration resistant insert and cleated outsole

## Additional requirements for special applications with specific marks:

<b>P</b> Penetration resistance	<b>HI</b> Insulation against heat	<b>WRU</b> Water resistant upper
<b>C</b> Conductive	<b>CI</b> Insulation against cold	<b>FRU</b> Flame resistant upper
<b>A</b> Antistatic	<b>CR</b> Cut resistant footwear	<b>HRO</b> Heat Resistant Outsole
<b>E</b> Energy absorption	<b>AN</b> Ankle protection	<b>SBH</b> Hybrid footwear
<b>I</b> Insulating footwear	<b>WR</b> Water resistant footwear	<b>ESD</b> Electrostatic discharge
<b>M</b> Metatarsal protection 100 J impact energy		<b>SRA/SRB/SRC</b> Slip resistance

**CAREFULLY READ THESE INSTRUCTIONS BEFORE USING THIS PRODUCT** – This footwear is designed to minimize the risk of injury from the specific hazards as identified by the marking on the particular product (see marking codes above). However, always remember that no item of PPE can provide full protection and care must always be taken while carrying out the risk-related activity.

**PERFORMANCE AND LIMITATIONS OF USE** – These products have been tested in accordance with EN ISO 20345:2011 for the types of protection defined on the product by the marking codes explained above. However, always ensure that the footwear is suitable for the intended end use.

**FITTING, SIZING** – To put on and take off shoes or boots, always fully undo the fastening systems. Only wear footwear of a suitable size. Shoes that are either too loose or too tight will restrict movement and will not provide the optimum level of protection. The shoe size is always clearly marked on our shoes.

**COMPATIBILITY** – To optimize protection, in some instances it may be necessary to use this footwear with additional PPE such as protective trousers or over gaiters. In this case, before carrying out the risk related activity, consult your supplier to ensure that all your protective products are compatible and suitable for your application.

**SOCKS & COMFORT** – Wear Bata Industrials socks, change your socks regularly and, in case of perspiration, take alternating hot and cold baths. Use soap sparingly. Change shoes regularly: leather is a natural product and should be allowed to rest.

Check [www.bataindustrials.com](http://www.bataindustrials.com) to contact our shoe advisor or to view all the standards that apply on each of our shoes. Risk analysis is always the responsibility of the prevention advisor. The prevention advisor, in consultation with the hierarchical line, prepares the advice whereby the employer undertakes the necessary actions.



**SERIOUSLY.**